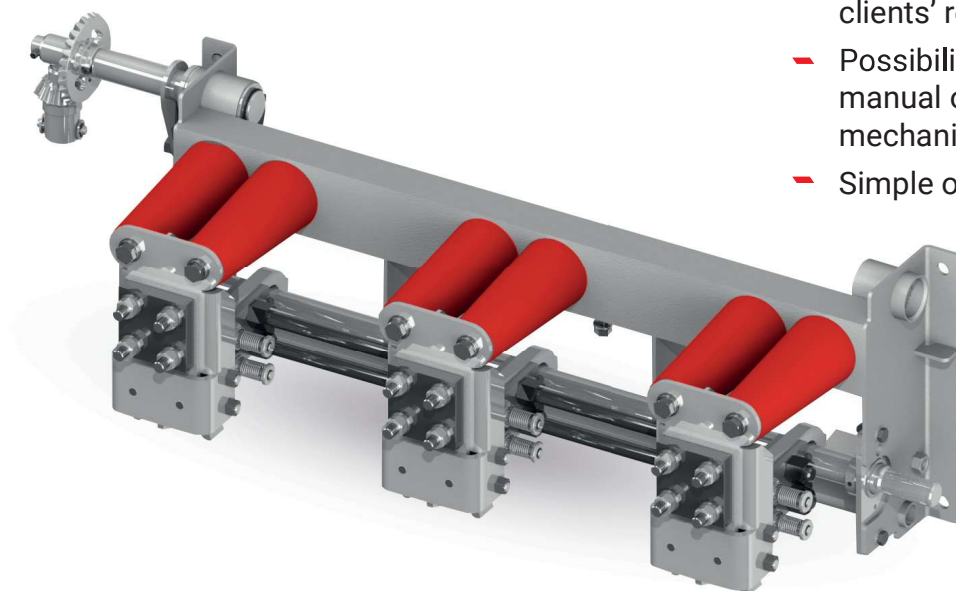


# UWS

## High current earthing switch

### CHARACTERISTICS

- High performance parameters
- Very high short-circuit and peak current – up to 76/190kA
- Indefective working
- Possibility to adapt apparatus to clients' requirements
- Possibility to maneuver with manual or motor operating mechanism
- Simple operation



### SPECIFICATION

Item	Parameter	Value	
		UWS-12	UWS-24
1.	Rated operating voltage	12 [kV]	24 [kV]
2.	Rated frequency	50 / 60 [HZ]	50 / 60 [HZ]
3.	Peak withstand current	160/190 [kA]	125 [kA]
4.	Rated short-time withstand current	65/76 [kA]	50 [kA]
5.	Test voltage (50 Hz) for earth and pole to pole insulation	28 / 32 [kV]	50/60 [kV]
6.	Surge test voltage for earth and pole to pole insulation	75/85 [kV]	125/145 [kV]

# DRAWING

