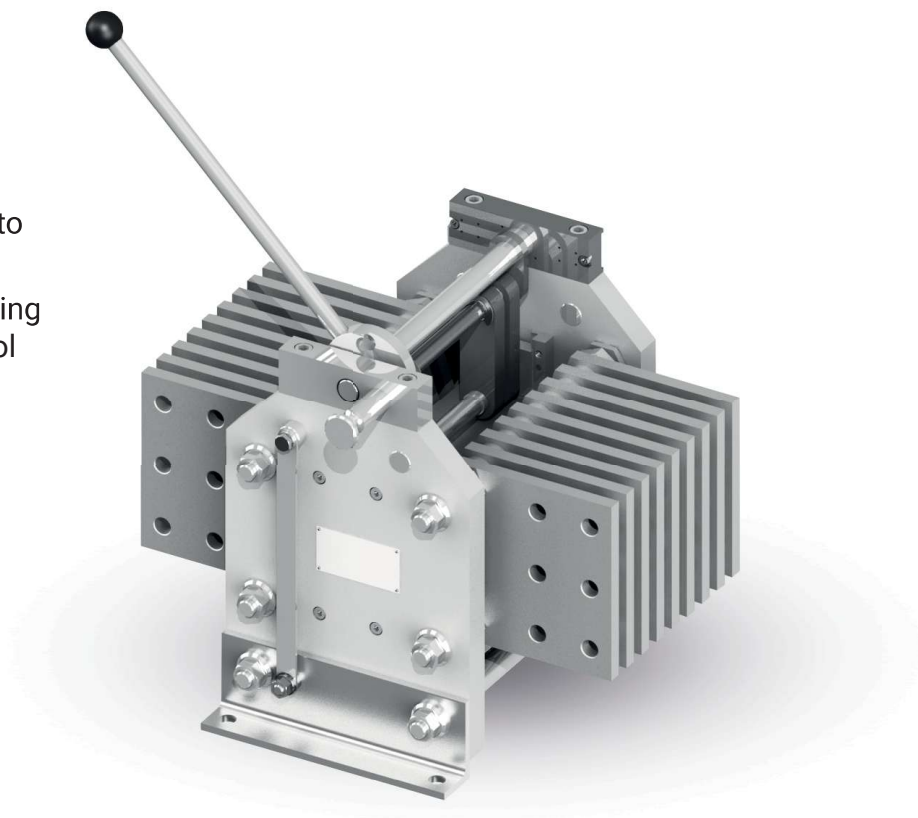


OW-I-25

Indoor disconnecter 660V, 25.000A

CHARACTERISTICS

- High performance parameters
- Possibility to adapt apparatus to clients' requirements
- Possibility to use motor operating mechanism with remote control
- Indefective working



SPECIFICATION

Item	Parameter	Value
1.	Rated operating voltage	660 [V]
2.	Rated continuous current	25000 [A]
3.	Rated short-time withstand current (1 sec.)	80 [kA]
4.	Rated peak withstand current	200 [kA]
5.	Test voltage (50 Hz) for insulation	3500 [V]
6.	Operational category	AC20, DC20
7.	Control switch rated voltage	250 [V]
8.	Control switch rated continuous current	10 [A]

DRAWING

