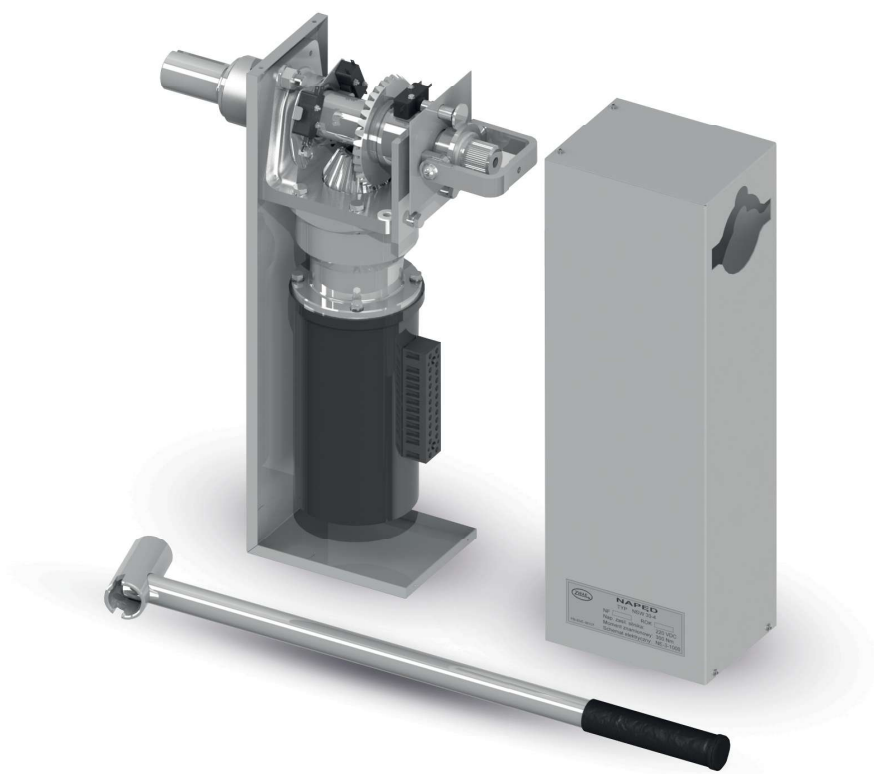


# NSW30

## Motor operating mechanism



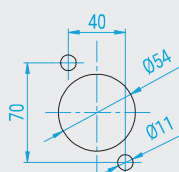
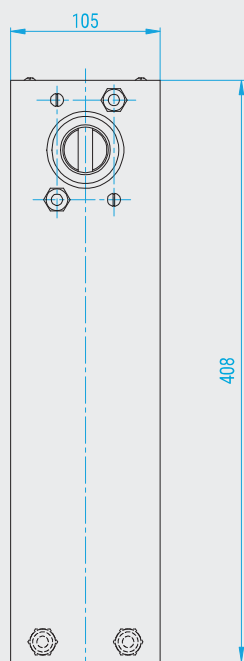
### CHARACTERISTICS

- Simple assembling of the mechanism
- Possibility to application with many kinds of apparatus
- Many voltage versions available: 24, 110, 220, 230 VDC/AC
- High torque allowing to application in hard conditions
- High mechanical durability
- Simple regulation of the angle up to 210° with limit switches assembled directly in the mechanism
- Limit switches assembled directly on the apparatus
- Compatibility as a replacement for manual operating mechanism NR-1
- Possibility to equip with electromagnetic interlock
- Many options of engaging with apparatus, e.x. with a gear
- Capability of interoperation with disconnectors from other manufacturers.
- Possibility to adapt control system of the mechanism for clients' requirements

## SPECIFICATION

Item	Parameter	Value	
1.	Operating mechanism type	NSW30-3	NSW30-4
2.	Applied motor type	with permanent magnets	series
3.	Motor rated voltage / rated current:	220 VDC / 4 [A] 110 VDC / 10 [A] 24 [VDC]/19 [A]	220 VDC / 4 [A] 110 VDC / 10 [A] 24 [VDC]/19 [A]
4.	Rated power:	300 [W]	300 [W]
5.	Shaft torque: - rated - maximal	150 [Nm] 300 [Nm]	150 [Nm] 300 [Nm]
6.	Switching time	ok.5 [s]	ok.5 [s]
7.	Maximum conductor cross section	4 [mm <sup>2</sup> ]	4 [mm <sup>2</sup> ]
8.	Enclosure protection rating	IP 55	IP 55
9.	Rated mechanical strength	2000 cycles	2000 cycles

## DRAWING



Mounting holes

