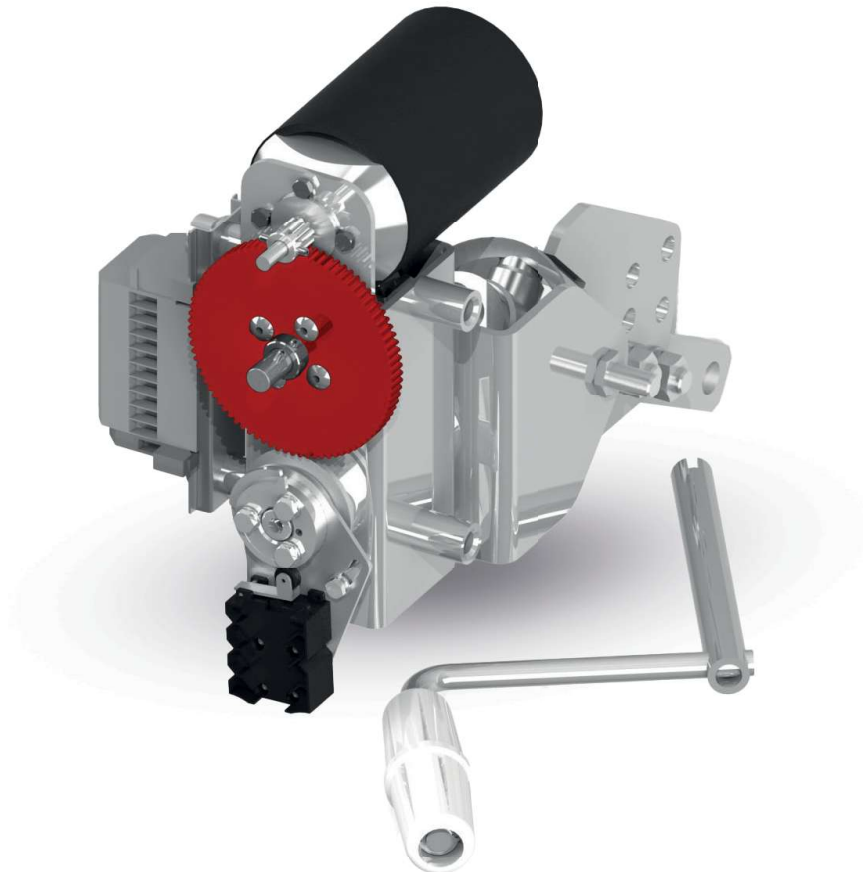


# NSP20

## Motor operating mechanism



### CHARACTERISTICS

- Simple assembling of the mechanism
- Possibility to application with many kinds of apparatus
- Indefective working
- Easy to use as a retrofit for pneumatic type mechanisms
- Fast assembling and simple adjustment

## SPECIFICATION

Item	Parameter	Value
1.	Motor rated voltage	220 VDC 110 VDC
2.	Rated power	65 [W]
3.	Motor rated current	0,5 [A] / 220 [VDC] 1 [A] / 110 [VDC]
4.	Shaft torque	200 [Nm]
5.	Switching time	ok.3s
6.	Maximum conductor cross section	4 [mm <sup>2</sup> ]
7.	Rated mechanical strength	2000 cycles

## DRAWING

