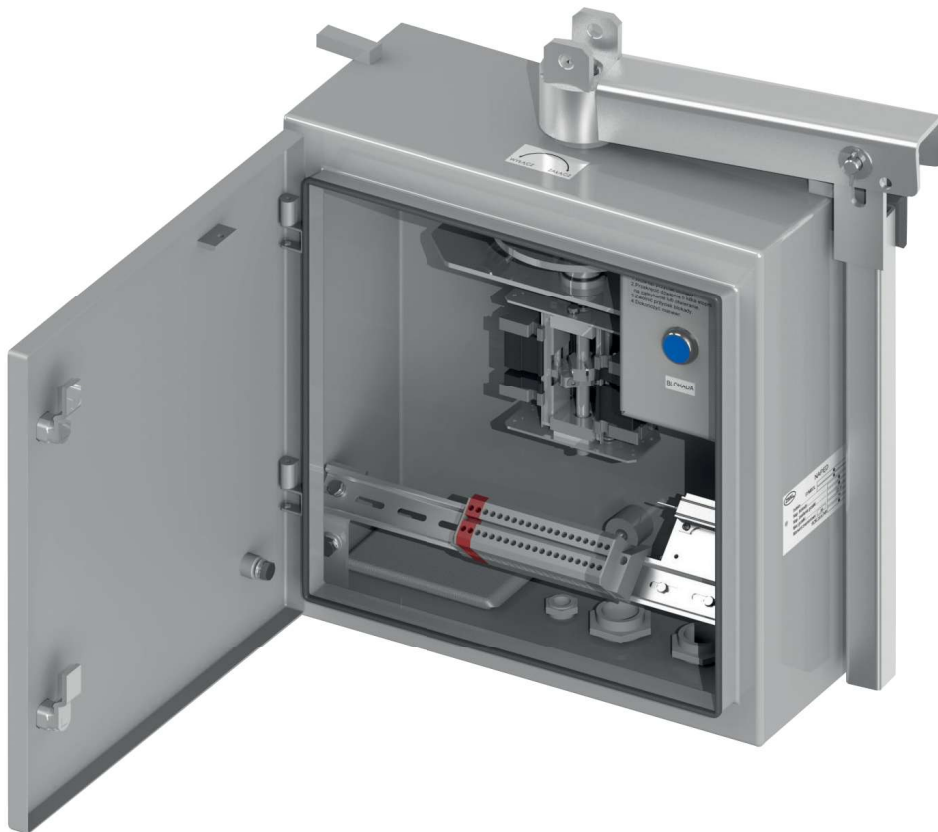


NR-5

Manual operating mechanism



CHARACTERISTICS

- Excellent anti-corrosion protection of the housing box
- Small power to maneuver required
- Short time of maneuvering
- Possibility of using padlock as the mechanical blockade in limit positions
- Capability of interoperation with disconnectors from other manufacturers.
- Simple replacement of the manual operating mechanism with a motor operating mechanism, without any additional changes to the construction.

SPECIFICATION

Item	Parameter	Value
1.	Rated voltage - heater	230 [VAC] 220 [VDC] 110 [VDC]
	- electromagnetic lock	230 [VAC] 220 [VDC] 110 [VDC]
2.	Rated power: - heater - locking coil	25 [W] 300 [W]
3.	Rated torque	300 [Nm]
4.	Main shaft angular displacement	192 [°]
5.	Rated switching capability of control switch	AC - 15; 230 [V], 2,5 [A] DC - 13; 220 [V], 0,25 [A]
6.	Maximum conductor cross section	4 [mm ²]
7.	Enclosure protection rating	IP 55
8.	Rated mechanical strength	2000 cycles

DRAWING

